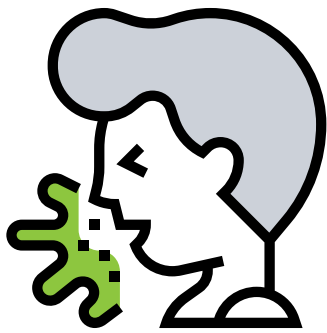


TLCHD COVID-19 case process

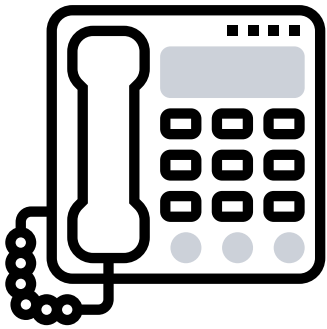
What to do



Do you meet the criteria?

If you have symptoms including:

- fever, dry cough, or shortness of breath following contact with a confirmed COVID-19 patient
- fever, dry cough, or shortness of breath following international travel to affected areas



Call the 24/7 nurse hotline

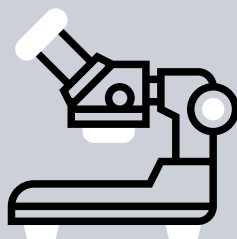
It is important to call ahead. They will provide guidance on next steps.

- 419-251-4000
- 419-291-5355

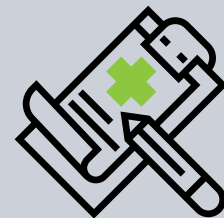
Testing process: patient should stay isolated while waiting for results.



1. Get tested.



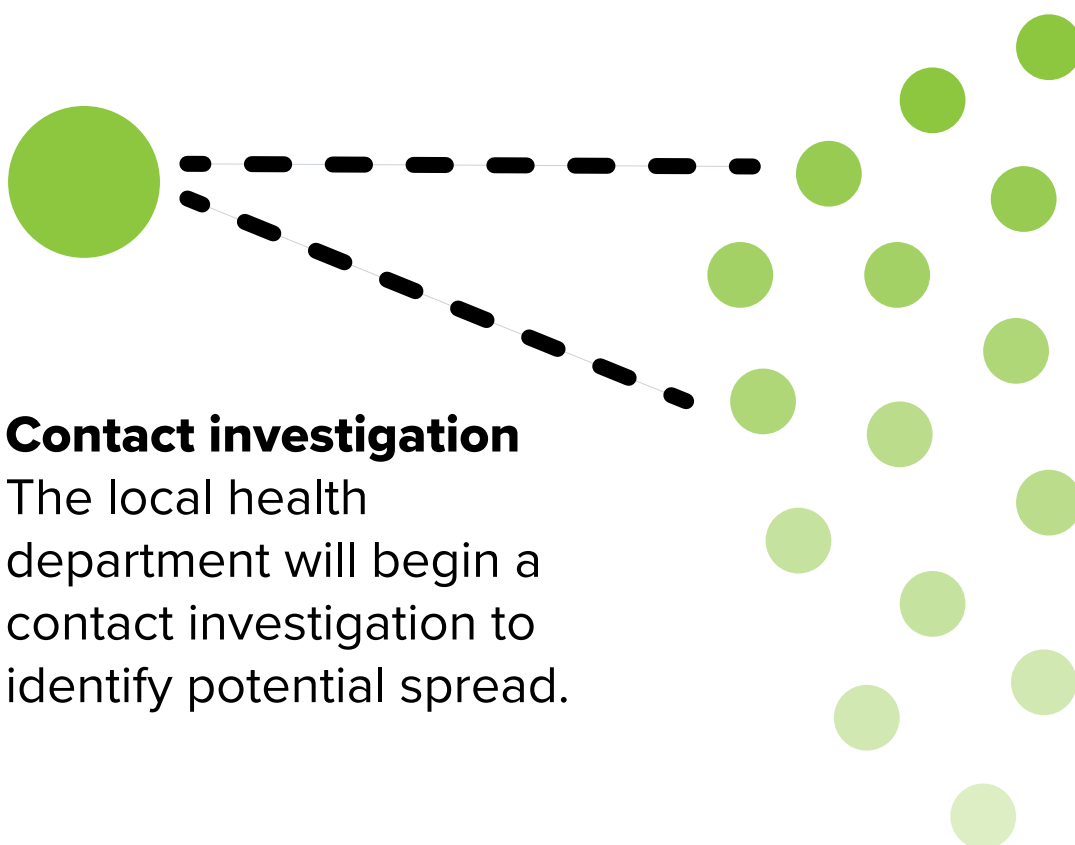
2. Test sent to the lab.



3. Test results delivered.

Contact investigation

The local health department will begin a contact investigation to identify potential spread.



High & medium risk

These people had the most contact with the infected individual. They should self-quarantine for 14 days.

Low risk

These people had minimal contact with the infected individual. They should self-monitor for symptoms.